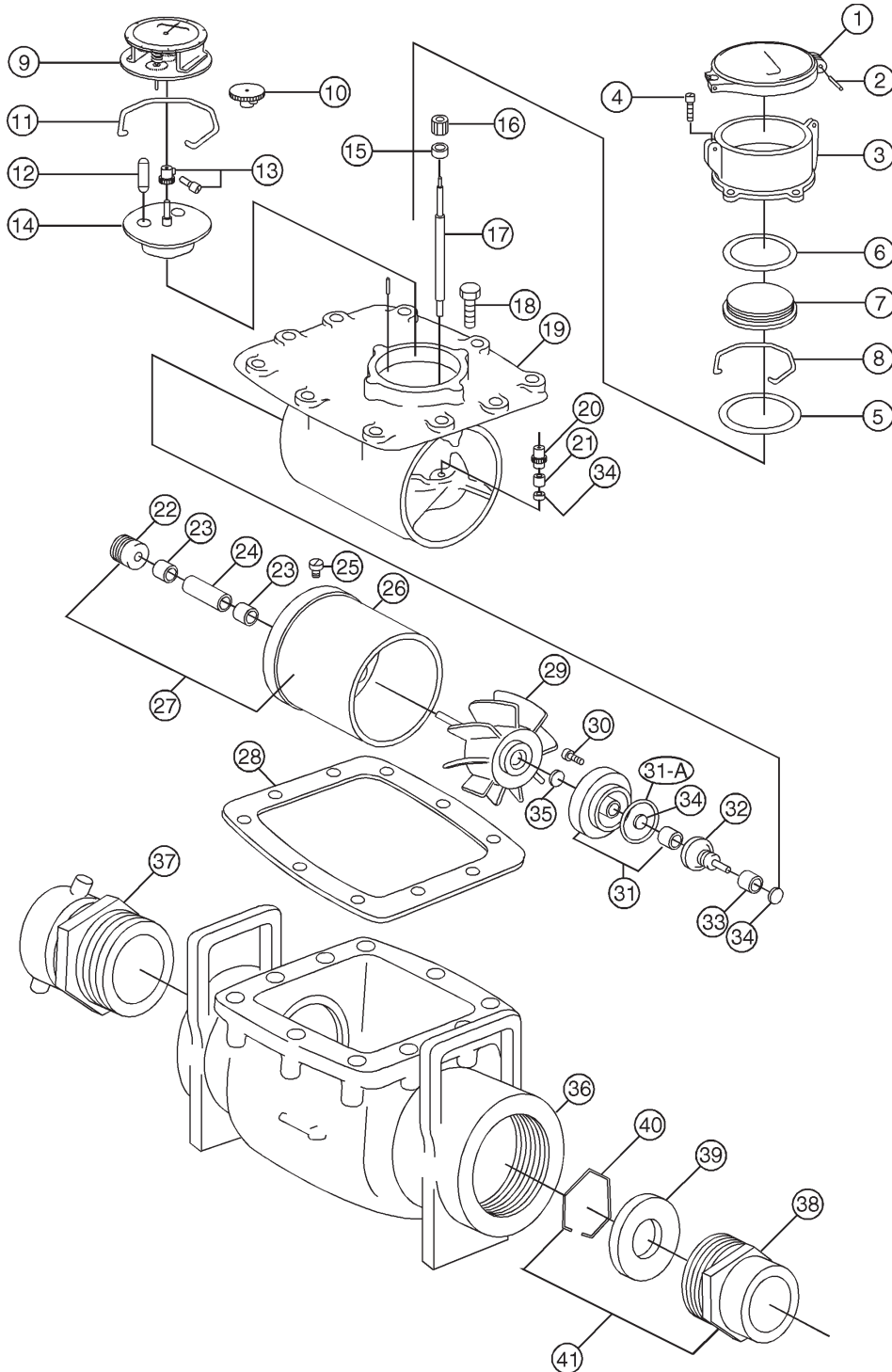


Model HM 3" Hydrant Meter



3" Fire Hydrant Meter

3" Model HM

Ref. No.	Description	Part Number
1	Lid	19292
2	Lid Pin	19202
3	Register Box 4 Ear with Lock Hasp	11242
4	Register Box Screw	19901 (4)
5	Case Seal Ring	19210
6	Glass Seal Ring	19214
7	Register Box Glass	19213
8	Glass Holding Ring	19106
9	Register (CF) (SG) (CM)	28144 28143 21636
10	Register Change Gear	Call Customer Service
11	Train Holding Ring	19106
12	Silica Gel Capsule	99960 (2)
13	Train Change Gear	Call Customer Service
14	Gear Train	30600
15	Train Drive Pinion	54918
16	Spindle Bushing	54947
17	Worm Gear Spindle	54909
18	Case Bolt	90073 (10)
19	Top Case Replacement Assembly (Cubic Feet) * Top Case Replacement Assembly (U.S. Gallons) *	54950 54951
20	Worm Gear	54908
21	Worm Gear Spindle Bushing	54916
22	Rotor Plug with Bearing	54925
23	Rotor Bushing	54915 (2)
24	Rotor Bushing Spacer	54914
25	Inlet Hub Retaining Screw	98394
26	Inlet Hub	54904
27	Inlet Hub Assembly	54931
28	Top Case Gasket	54903
29	Rotor Assembly	54910
30	Bearing Cap Screw	98394 (3)
31	Bearing Cap Assembly **	54926
31A	Bearing Cap O-ring	98302
32	Worm Assembly	54920
33	Worm Bushing	54916
34	Sapphire Thrust Bearing (for Worm Gear Spindle, Worm Assembly)	98392 (3)
35	Sapphire Thrust Bearing (for Bearing Cap Assembly, Inlet Side)	98393
36	Bottom Case	54990
37	Inlet 2-1/2" Fire Hose Coupling (Female Thread-3" NPT x 2-1/2" HPT Swivel Adapter)	54018
38	Outlet 2-1/2" Fire Hose Coupling (Male Thread-3" NPT x 2-1/2" HPT Reducing Nipple)	54993
39	Orifice Disc	54995
40	Disc Retaining Ring	19106
41	Outlet Fire Hose Fitting and Orifice Disc Assembly	54993

CF = Cubic Foot
SG = U.S. Gallon
CM = Cubic Meter

* Includes all parts except case bolts and bottom case.

** Does not include 1 sapphire trust bearing 98392 required for outlet side. Order separately.